

TEAM AROUND THE FAMILY

Team Around the Family, also known as 'TAF' is a meeting between a child, their siblings and family, along with the group of professionals who are working with them.

ACTION PLAN

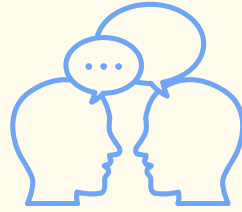
The purpose of TAF meetings is to share information and to create a solution focused action plan, that will support the needs of your family as a whole, to influence positive changes

FAMILY CENTERED

Your family's voice should be at the centre of all discussions and decisions, and you will be allocated a Lead Professional, who will be your family's main point of contact throughout the TAF process.

CONFIDENTIALITY

The Early Help Assessment & Team Around the Family Action Plan will be stored securely on Children & Family Community Services Recording System.



CONSENT

Accessing Early Help is voluntary and requires your consent. The information which you and your family provide will only be shared with your family's consent.

However, there may be times when the people working with you need to share information.

The EIP should always discuss this with you first, but may not if for example:-

- They need to find out urgently if a child is at risk of harm
- To help a child who is at risk of harm
- When an adult is at risk of harm or
- To help prevent or detect a serious crime

REFERRAL PROCESS

Social Workers:

Please send completed referral form to familysupportreferrals@gov.gg

All other referrals:

Please complete the Multi Agency Referral Form (MARF) via the Multi Agency Support Hub.

If you would like to find out more information about Early Help Assessments, please contact 01481 226923 for Family Support Services



ABOUT US:

WHAT IS AN EARLY HELP ASSESSMENT?

Children and their families might need some extra help and support, this might come from a range of different agencies all working together. An Early Help Assessment is a way of writing down what is going well in your family, what the worries are and what needs to happen to help things improve. You will agree the best way to make this happen; this will be written into an Early Help Assessment Form.

HOW TO REQUEST AN EARLY HELP ASSESSMENT?

If you have worries about your family then you can ask any professional working with you or your children for an Early Help Assessment. A professional connected to your family who has concerns may suggest to you that an Early Help Assessment could be of benefit to you. This is the starting point to supporting you and your family with agencies working together before you and your family's needs increase.

HOW TO ACCESS AN EARLY HELP ASSESSMENT ?

You can self-refer for an Early Help Assessment or ask a professional to refer on your behalf via the **Multi Agency Support Hub**. The MASH Screening Team will ask the Early Help Co-ordinator & Team Around the Family Adviser (EHA & TAF Adviser) to contact you to talk through the process and to help you decide if you feel an Early Help Assessment & Team Around the Family Approach would help you and your family. The EHA & TAF Adviser will then make arrangements for an **Early Intervention Practitioner**, based in Family Support Services to contact you to start the process.

EARLY HELP ASSESSMENT

& Team Around the Family

